

# 150 FACTS ABOUT BOISSEVAIN



*Celebrating our  
infinite horizons*

1. At 28 feet tall, Tommy Turtle is the largest known reptile in the immediate area.
2. Rick Neufeld, the composer of "Moody Manitoba Morning" was from Boissevain.
3. The now defunct Great Northern Railway once ran a line through Boissevain.
4. Boissevain has won the International Championship in Communities in Bloom on three occasions.
5. The present library was once the home to many businesses, including MacLeod's, Boissevain Bakery and Fields.
6. In 1990 The Boissevain Co-op was the first business in Manitoba to build a corporate full tank facility, just north of Boissevain.
7. The town was named after railway investor Adolphe Boissevain.
8. Wayne Pringle has worked at Pringle's Men's Wear since it opened in 1963.
9. The present Credit Union building was opened in 1980, replacing the smaller office located further down South Railway Street.
10. The Canadian Turtle Derby ran for 30 years, from 1972 to 2001.
11. Boissevain's first carwash was opened by Ed Franz at his Chrysler dealership in 1969.
12. The present Roman Catholic Church, St. Joseph's, was completed in the Manitoba Centennial year of 1970.
13. Before the opening of the Boissevain Health Centre in 1977, the Community Centre was located there and served as hospital.
14. Boundary Co-op opened its new grocery store in 2013.
15. Although Whitewater Lake has been flooded for many years, it spent most of the 1980's bone dry.
16. Home Routes concerts bring established musicians to Merle Neufeld and Marilyn Derksen's throughout the year.
17. The Boissevain Lions Club is celebrating 60 years in the community in 2017.
18. Former Boissevain resident Brad Kempthorne, a one-time member of the Brandon Wheat Kings, had his number retired by the Peoria Rivermen.
19. The Boissevain Kinsmen were chartered in 1978.
20. Farm Focus celebrated agriculture in the community for 11 years.
21. The Canadian Turtle Derby once had a Derby Queen competition.
22. Dr.'s Don and Ethel McPhail served the community from 1947 to 1976.
23. The present home of Michael Waldron's Law office was once the town post office.
24. Former cabinet minister Errick Willis became the lieutenant governor of Manitoba in 1960.
25. Beckoning Hills Museum was a Centennial project and opened in 1967.
26. Boissevain and Morton have had three major anniversary celebrations – the Jubilee in 1956, Centennial in 1981 and 100/125 years in 2006.
27. Rural districts like Royal, Primrose and Wakopa once had their own schools, but they gradually disappeared by the amalgamation into school divisions in 1968.
28. Oil was found in the Whitewater area on Abram Dyck's farm in 1953.
29. Boissevain's original name was Cherry Creek.
30. The seal of the RM of Morton once read, "Ours is a Goodyly Heritage."
31. The first reeve of Morton was William Millar.
32. The first mayor of Boissevain was J.S. Reekie.
33. The Union Bank, which started in Boissevain in 1891, became the Royal Bank after a merger in 1925.
34. Ed Anderson has been mayor of Boissevain since 1989.
35. The present Manitoba Conservation office was built in 1903.
36. The closest city to Boissevain with a population of more than a million is Minneapolis-St. Paul, which is 698 kms to the southeast.
37. Ed Anderson has served as mayor of Boissevain (now Boissevain-Morton) since November 8, 1989.
38. A new water treatment plant for the community was officially opened on October 8, 2000 with Premier Gary Doer in attendance.
39. The first three murals done by the Boissevain & Morton Arts Council were painted in 1992.
40. The 1894 Art Gallery building had once served as the home of 'It Makes Cents' dollar store, and Hazlewood Drugs.
41. During prohibition, the area was rife with "rum runners" who were running illegal booze across the US border.
42. The Boissevain Arts Celebration Committee opened the ArtsPark on Stephen Street in 1999, with improvements continuing to the present day.
43. For several years, with the assistance of the federal Katimavik program, Boissevain hosted volunteer "Katimavikits".
44. Although it has changed fields, the Boissevain, Morton and Whitewater Growing Project has been growing crops and raising money for the Canadian Foodgrains Bank since 1998.
45. It took 35 years for the Boissevain Border Kings to win their first South West Hockey League championship in 1992, but they won more titles than any team in the league, including six straight.
46. There are cairns marking 22 school sites in Morton.
47. The Willow Tree beside the old Ag Office was granted heritage designation in 1987.
48. In 1981, first-overall draft pick Dale Hawerchuk of the Winnipeg Jets was the parade marshal for the Turtle Derby parade.
49. In 2002, twisted wreckage from the Twin Towers in New York from the previous 9/11 was moved to the International Peace Garden for a memorial.
50. The Case/IH dealership in Boissevain known as Rocky Mountain has had several names including JHR Farmland, Boissevain Farm Equipment and Red Power.
51. The Boissevain Lions Campground has 34 campsites.
52. When the Boissevain Golf Course unveiled its expansion in 2016, it changed the course from a par 33 to par 36.
53. Curling has been an organized sport in Boissevain since 1890.
54. Grain companies UGG, Manitoba POOL and Parish & Heinbecker all once operated elevators in Boissevain.
55. Former MLA Brian Ransom served as the Minister of Finance in the Sterling Lyon government.

## community CHURCH SERVICE

*Join us to celebrate  
Canada's 150!*

Churches of Boissevain will hold  
a joined community service

**Sunday, July 2 @ 10:30am**  
BOISSEVAIN FAIRGROUNDS

**Everyone Welcome**  
No offering will be taken



# CANADA DAY

*in Boissevain*

## SATURDAY, JULY 1

**Show & Shine Car Show**  
SOUTH RAILWAY STREET  
12PM-4PM **Free admission**  
⇒ Lions Burger Buggy 11am-3pm  
⇒ Free Birthday Cake 12pm-2pm  
⇒ Rib Cook-Off 11am-2pm

**Art Show Opening**  
1894 ART CENTRE 11AM-3PM  
*Find Your Wild* by Morag Schonken

**Lions Parade 4PM**

**Celebrations 5PM-1AM**  
AT BOISSEVAIN FAIR GROUNDS  
⇒ Roast Beef Supper 5-7pm  
⇒ Food Booth 5pm-1am  
⇒ Beer Garden 5pm-1am  
⇒ Boundary Co-op Stage 6-11pm  
⇒ Children's Carnival 6-9pm  
⇒ **Fireworks** 11pm

For complete list of events visit [www.therecorder.ca/events](http://www.therecorder.ca/events)

# CANADA 150 *Interesting facts about Boissevain*

56. In 2005, Boissevain School was named as one of Canada's top 30 schools by Maclean's for their use of technology.

57. The current adult drama club ADLIB got its start as the Boissevain Drama Players in 1986.

58. The Boissevain School Broncos celebrated the 30th anniversary of their high school football championship in 2016.

59. The current building housing Tiny Turtle Playroom was opened in 2004.

60. Western Archib, for many years under the Dring name, has operated in Boissevain since 1946.

61. Prior to 1929, the Boissevain Cemetery was run as a private enterprise.

62. Two murals – the Red Coats and the Boundary Commission/North West Mounted Police Trail – are dedicated to the RCMP.

63. In 1975, a comic book by Ken White, The Amazing Captain Turtle, based in Boissevain, was released.

64. The Boissevain Bantams won the provincial championship in baseball in 1977.

65. The Turtle Mountain Community Development Corporation was started in 1990.

66. Access TV was once housed near the old water towers.

67. The first Boissevain Recycling site started in 1990 in the back of the old Fire Hall. After six months it moved to the former Evan's honey house.

68. The Hot and Cold designations on the water towers began as a graduation prank.

69. The first campaign of Donor's Choice in Boissevain was run in April of 2002.

70. Celebration tokens featuring Tommy Turtle for Boissevain and Green Meadows Barn for Morton were minted for the 2006 anniversary. 71. The local cattle industry was badly shaken for several years by a single case of BSE in Alberta.

72. Boissevain was once the home of two competing newspapers, the Recorder and the Globe.

73. In 1973, Irvin Goodon moved Goodon Industries to Boissevain.

74. Boissevain and Morton were formally amalgamated in 2015.

75. The last reeve of the RM of Morton was Bob McCallum.

76. St. Matthew's Anglican Church was opened in 1890.

77. St. Paul's United Church began its life as a Methodist Church prior to the union in 1925.

78. Connections projects started at Boissevain School in 1995.

79. The school has participated in the Terry Fox run since 1981.

80. The first Boissevain Recycling site started in 1990 in the back of the old Fire Hall. After six months it moved to the former Evan's honey house.

81. Double Diamond Farm Supply was started in 1975.

82. At a Town Council meeting in 1910, a town hall was authorized at a cost of \$12,000.

83. An egg station was operated in the community from the 1930's to the 1960's, with the last building used being the present Recorder office.

84. Boissevain Bakery has operated out of three buildings – one on the south side of South Railway Street and two on the north side.

85. The area by the Recorder office and behind the Co-op offices used to be a parking lot that was treed on three sides.

86. Tommy Turtle now holds an American flag. At one time he held a Manitoba flag alongside a Canadian.

87. The campground during the early years of the Turtle Derby was known as the Zoo due to the exuberance shown by its inmates.

88. Rhonda Coupland and Sharon Ardrone were the last employees to work at the Ag Office in Boissevain.

89. Although the Recorder had six different editors in its first six years, it later went from 1905 to present with only four.

90. Art is Big in Boissevain.

91. Boissevain has been the subject of two celebratory songs – Boissevain Fair and Take Me Back to Boissevain.

92. Boissevain has an entry on Wikipedia.

93. Boissevain area soldiers

were the focus of three World War One documentaries made by local product Marc George.

94. Boissevain does not appear on the westbound signs outside of Killarney along #3 Highway.

95. The MLA for Turtle Mountain, which Boissevain was a part of at the time, was once Sterling Lyon, who would later become premier of Manitoba.

96. A local MLA, Ed Dow, once represented the area for the Liberal Party, a beyond unusual occurrence.

97. The cenotaph memorial to fallen soldiers was dedicated in July of 1924 at

Garden were in 2002.

107. From 1968 to early 2017, only two people – Gerald May and Lloyd Leganchuk – served as municipal administrators.

108. The present industrial arts room in Boissevain Collegiate was built in 1972.

109. The Juvenile hockey team won the provincial tier one and two championships in 1979-80.

110. Wayne Turner has been a barber in Boissevain since October of 1980.

111. Good Sam Club held its trailer event in Boissevain in 2006 and 2007.

112. Despite fears to the

120. At one point in the 1980's, there were four grocery stores in Boissevain.

121. In 1994, the Boissevain Community Choir was opened up to singers outside of the two Mennonite Churches.

122. A longtime staple of the Canadian Turtle Derby, the Zack's stable from Sausalito, California made its first appearance in 1979.

123. Tommy Turtle cost \$10,000 to build.

124. In 2003, the first Relay for Life was held at the Peace Garden.

125. The late Jim Easton was the first Recreation Director for Boissevain-Morton.

134. Brant Little from Boissevain represented Canada at the 1928 Summer Olympics in Amsterdam.

135. Oil companies Esso, Shell, PetroCan, Texaco, Gulf, Tempo and British-American Oil all were represented in Boissevain.

136. Cliff Mains and Fred Rodwell were the most decorated soldiers from Boissevain.

137. The first Brownie pack started in Boissevain in 1946.

138. The Credit Union got its start as the Wassewa Credit Union in 1941, and since has been known as Boissevain, Turtle Mountain and Sunrise.

139. Prairie Partners has been known by many names – Sunny Side School, AMR, ACL and the Boissevain Association for the Handicapped.

140. Bernice Pettypiece was the first head librarian at the Boissevain & Morton Library and stayed there from 1959 to 1977.

141. The RM of Morton was named after George Morton, the "Cheese King of Canada".

142. In 2000, the Arts Celebration Committee held their first Team Trivia night.

143. When new murals were added to the gallery, they were signed by the artist at a 'Signature Day' event.

144. New dressing rooms were added to the Boissevain Arena in 2004.

145. The shortest street in Boissevain is Jubilee Street.

146. This past winter saw an unusual event – a "thundersnow" in which thunder came during a snowstorm.

147. The Boissevain Community Archives were established in 1976.

148. The Village of Boissevain became the Town of Boissevain on April 10, 1906.

149. The town had its own constable until 1975 when the RCMP took over.

150. On June 29, 2017, Paul Rayner attended his 20th consecutive Boissevain School graduation as the reporter for the Recorder.



its previous location on South Railway Street.

98. The Boissevain Legion Branch began in 1919.

99. In 1968, the Boissevain Border Queens ball team won provincials in Teulon, Manitoba.

100. The Boissevain Figure Skating Club was formed in 1961.

101. Lee Chandler of Boissevain has excelled at the national and international level in figure skating.

102. About a dozen cottages were built on Arbor Island in Lake Max at the turn of the last century.

103. The Canada Customs offices were placed at the actual border in 1928.

104. The new Boissevain Community Theatre opened in 2012.

105. The first movie shown in the new theatre was MIB 3.

106. The first 9/11 ceremonies held in the International Peace

contrary, Y2K did not cause any problems in Boissevain (or elsewhere) on January 1, 2000.

113. Cell phone service came to Boissevain in 1992.

114. The RCMP announced that the Boissevain, Killarney and Deloraine offices would be amalgamating in 1998.

115. The RM of Morton began issuing building permits for Lake George in 1982.

116. Du-Rite Motors has been running since 1959.

117. After the painting of the Romance of the Railway mural on the present library building in 1992, the park there took the same name.

118. 50,000 people attended the opening of the International Peace Garden in 1932.

119. The present site of Hazlewood Drugs was once a Foodtown and earlier a Tom Boy Grocery store.

126. Boissevain School introduced a baseball team in 2005.

127. Jubilee School, which was once located at the corner of Stephen and North Railway was later split in half and moved to Killarney golf course.

128. There was an outbreak of infantile paralysis in Southwestern Manitoba in 1936.

129. During the post-war boom of the late 1940's, the RM of Morton saw hydro brought in to the farms.

130. Schaffner Street in the new development is named after Dr. Schaffner who practiced in Boissevain for 24 years.

131. Lots in the new development were once available for a dollar.

132. Westview Lodge opened in 1963.

133. The CPR once ran a line from Boissevain to Lauder called the "Blue Flea".

by PAUL RAYNER  
Recorder staff

# Looking back at Boissevain's business rich heritage

This is an anecdotal summary; hence, possible inaccuracies and / or omissions.

Information taken from Beckoning Hills History Book as remembered by Wayne Pringle, and from The Boissevain Recorder archives.

Photos from Boissevain & Morton Regional Library Archives, Boissevain Recorder archives and by Anna Latimer and Lorraine Houston.

By no means are all businesses in Boissevain-Morton from the past or of today featured in these pages, but if you are interested in learning more about the history of the community, please visit the Beckoning Hills Museum or the Boissevain-Morton Community Archives at the local library.

## SOUTH RAILWAY EAST



**Home Hotel**

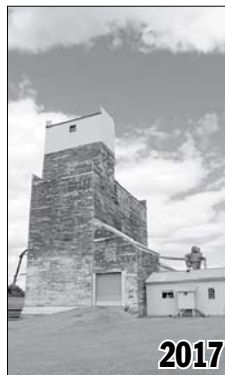


1925-1974: Home Hotel, various owners  
 1974: Rocky Addison new owner. Upper-floor removed and renamed The Addison Inn  
 1974-1994: several owners – closed for one year  
 1994: purchased by Terry Volden – renamed Cherry Creek Inn  
 1998: purchased by Red Coat Inn (Ross Forfar, Gary Kloon, Gary Roel)  
 – restaurant leased, renamed Cactus Flower  
 2001: restaurant leased to Betty Canada – now Canada Corner Restaurant  
 2003: restaurant closed – still owned by Red Coat Inn  
 2011: restaurant re-opened as Chicken Chef, bar & hotel renamed Home Hotel  
 2015: restaurant renamed Home Café; Chicken Chef ceases



**Paterson Elevator (East)**

1959: Chapman's car lot  
 1964: N.M. Paterson Grain Company



**Food Pantry**

Two story house (Fred Rodwell residence).  
 Later - hair studio.  
 Building demolished.  
 2007: Boissevain Food Bank built by Whitewater Mennonite Church .

**Community Centre**

1977: old Boissevain Hospital moved to this site for a seniors drop-in centre, called Boissevain Community Centre and Beckoning Hills Activities Club.

**Ag Office**

**Ag Office**

1938: New building for telephone office  
 1963: MTS moved to new facility on Mountain St.  
 1963: Building occupied by Agricultural Office  
 2013: Services closed, building empty

**Park and Heritage Site**



1930-57: Boissevain Recorder  
 1957: Robinson Store  
 1959: Chapman Motors GM Dealership. IOOF Hall upstairs  
 1980s: Building demolished  
 Now rest area and heritage site



# BROADWAY


**Wheatland Funeral Home**
**REKK Beauty**
**Boissevain Plumbing & Heating**
**Canada Post**


1998: Turtle Derby Stables (located north of funeral home) was moved to fair grounds. Now empty concrete lot with bench and heritage tree info.

**BOISSEVAIN FUNERAL HOME**

1949: Funeral home built by Henry Morrison  
2004: Wheatland Funeral Service, Killarney



1950-52: Massey Harris Dealership

1952-62: MacLeods Hardware

1962: Auto Repair Shop - Abe Fast; later Van Hoppe

1987: Purchased by Eric Reichert - moved to Hwy.10

1989: Building purchased by Wayne & Wendy Turner

Boissevain Barber & Boissevain Floral Boutique

2004: Leona Devuyt buys floral shop, expands into entire

building. Barber shop moves to Broadway St. South

2014: REKK Beauty Hair Salon - opened by Kamara Sisson



1950: Egg Station operated by Manitoba Co-op

1960s: closed

Later: Refrigeration Sales & Repair, by Bill Petras

1973: Sandi's Ladies Apparel, owner Sandra Burton-

Burton's Electric at rear, operated by Frank Burton

1996: Sandi's & Burtons move to South Railway

1996: Plumbing & Heating, owner Dale Merritt


**Manitoba Parks & Conservation**

1903: Land Titles Office built. Closed in 1984 by NDP gov't adopted policy of centralizing government operations. Second floor used for provincial court.

1993: Mainfloor - Manitoba Parks & Conservation  
Upstairs: Manitoba Taxation Branch, and Manitoba Habitat Heritage Corporation



SE corner North Railway & Broadway St.

1980: small building with several large, petroleum holding tanks. Agents for Imperial Esso Oil - later Shell Oil

1980: building demolished



Open lawn area north of present Canada Post

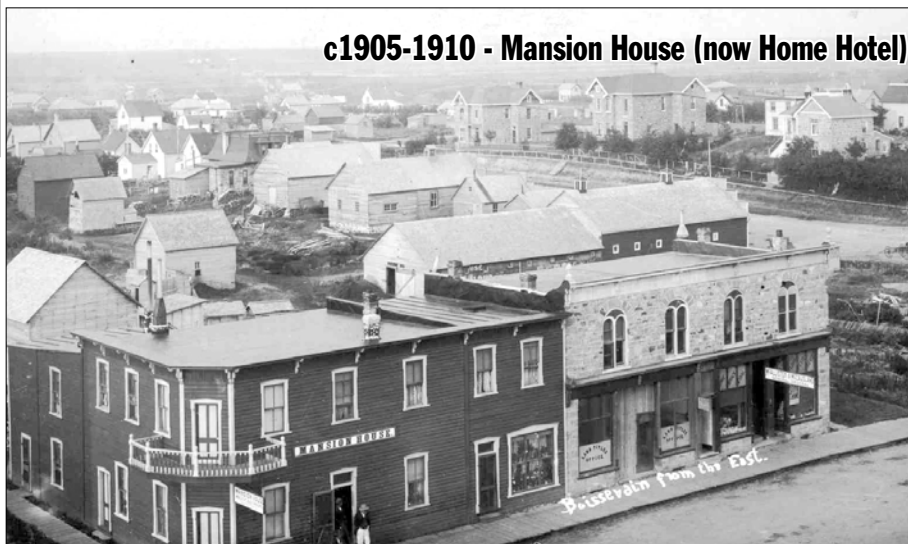
1950s: Carpenter & Wood/Repair Shop owner Winfred Cliffe. Sharpened skates 35 cents per pair

1972: Auto Repair, owner Elmer Hill

1972: Canada Post built new building. Also location of Agriculture Canada Health Office

2010: Ag Health office closed at post office.

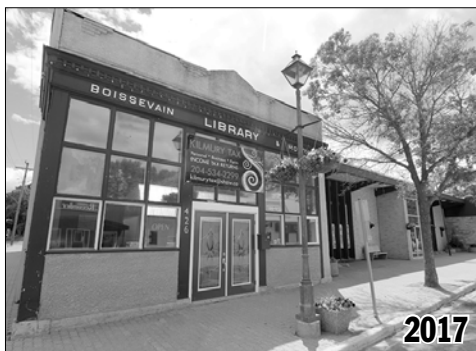
## c1905-1910 - Mansion House (now Home Hotel)



*Taking a trip down  
memory lane*



## SOUTH RAILWAY - SOUTH SIDE

**Kilmury Tax****Boissevain-Morton Civic Centre**

c. 1950s

1922-1957: King's General Store. Main floor - men's clothing & dry goods; upper floor - groceries. (Wayne Pringle acquired his love for business working here after school & Saturdays from aged 13-17)

1959-2015: Boissevain - Morton Regional Library

2015: Kilmury Tax Services



1977

1945: GM Dealership

1957-63: MacLeod's Hardware

1947-1958: Robb's Hardware - Pearl and Lysle Robb

1970: New Boissevain Civic Centre and Highways Dept.

1973: CJRB Radio station and Public Room in basement



1977

**Countryland Realty . Rolling Spokes****The Station**

1898: Welch's Men's Furnishings

1963: Del & Wayne Pringle purchased, re-named Pringle's Men's Wear

1976: Del moved to Brandon

1988: Ken Pringle purchased Del's shares

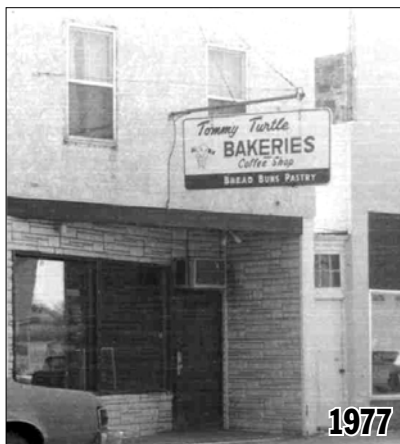
2000: Pringle's relocated - purchased Cal's Pro Hardware building one block west.

2000: Rick O'greysik opens Tall Pines Printing, hobby crafts & car kits

2001: Audrey Hicks purchased building - relocated The Station from across street

2012: Leah Cann purchased The Station

2016: Catherine Holditch purchased The Station



1977

1930: Crowhurst's Bakery

1958: Maxwell's Bakery

1971: Tommy Turtle Bakeries - Brian Clark

1980-1993: Boissevain Bakery - Ron & Sharon Fikkert

1993: Wayne Robertson real estate; Hedy Albrecht sewing centre, Boissevain Access TV.

1997: Robertson opens W.G. Consignments; purchased by Don Voodre

1998: Audrey & Doug Hicks purchased and renamed as Old Crow Market

2000: (Ken) Dixon Agencies, insurance and mobility products

2003: Wayne Robertson relocated real estate business back to this location

2006: Countryland Realty (Rob Adams); Raylene & John Smith - Valley Royal Travel - now McPhail Travel; Rolling Spokes, Boissevain & Morton Foundation



1977

# SOUTH RAILWAY - SOUTH SIDE



2017



2017

**Cherry Creek Outfitters . Vixen Hair Salon . The Music Studio . J.F. Ryan Building Rentals . 1894 Art Centre . Waldron Law Office**



1977

## EAST SIDE OF BUILDING

1951-1979: barber shop, various owners  
1979: purchased by Wayne Turner, barber shop  
2014: Vixen Hair Salon

## WEST SIDE OF BUILDING

1945: Bob Green's Jewelry Store  
1965: Ladies Style Shop  
1966: Gift Store operated by Mrs. Fin Gerdis & Bertie Bowman  
1968: Irene's Fashion Shop - Irene Debacker  
1969: Betty's Teens & Fashions - Betty Mitchell  
Later: purchased by Henry Thiessen - Florist Shop  
1977-80: Jack R. Johnston - Chartered Accountant office  
2010: Addictions Foundation  
2015: The Music Studio, Dianna and Jo-Anne Neufeld

## BOTH WEST AND EAST SIDE OF BUILDING

1980: Eleanor Smullin opened music store  
1991: Cherry Creek Gallery  
1994: Kevin Orriss - Video Rental. Bob Wintle - Travel  
1996: Page One Book Store (Kathy Braybrook)  
2000: Monica Martens Massage Therapy, Tea House  
2002: Murray Turner - M.J. Computers  
2011: Jason & Carla Dyck - Crazy Daisy Emporium  
2015: Jeremy Doerksen purchased building. Bike repair shop at back

## Waldron Law Office

1935-81: built for Post Office. Relocated to Broadway St.  
1981: wicker/waterbed store, barber shop & other offices  
1986: bldg purchased by Michael Waldron  
Frank Goodon Jr. opens hockey card shop in basement. Closed in 1996  
1999: Cherry Creek Gallery office supply store  
2004: office space upstairs  
2001-2002: movie rental business opened  
2004: Waldron Law Practice & other offices  
2010: Waldron Law Practice only



1977

1932: Aikens Insurance, Bob Aikens 'took over' insurance business from his father  
1949: Jay Ryan joined the business  
1962: Jay Ryan purchased business  
1979: Jack Henwood purchased insurance business. Later move down the street  
1984: Ken Dixon rents office space from J. Ryan; hair studio operated by Winnie Mitchell  
1956-61: Bert & Hazel Beech  
1961-77: Velma Siemens (Coates) hair studio  
2000: Dixon vacated  
2002: front office converted into living suite  
2004: Ryan Bldg. owned by Doreen Ryan: 1 upstairs suite; 2 lower level suites; no business area  
2015: Joe Hammond purchased building



1977

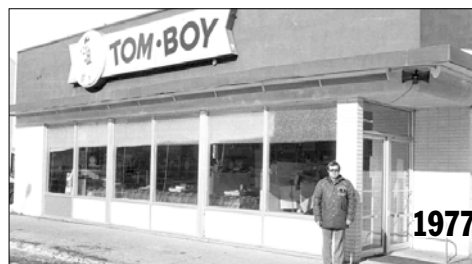
1945: Doug Houston purchased Gamble's Drug Store, renamed Houston's Drugs  
1958: Doug's son, Jack, joined business  
1992: Jack sold business to Brent & Jill Hazlewood  
1992-96: Hazlewood Drugs - moved to larger premises across street  
1998: building purchased by Stacey Cook. Boissevain Dollar Store opened  
2003: Purchased from Stacey Cook by Val Hawkes  
2004: Boissevain Dollar Store closed  
2005: Ed Anderson purchased building  
2005-08: leased by Anita Crowe, opens 'It Makes Cents' dollar store. Later moved to Mill Road  
2011: building purchased & remodeled by Casey & Christina Guenther. 1894 Art Center. Residence upstairs.

# SOUTH RAILWAY - NORTH SIDE



2017

**Hazlewood Drug Store**



1977

1973: large building built by Ray Desjardins, location of Tom Boy Food Store.  
Later: managed by Doug Armstrong as Doug's Foods.  
Later: Tom's Tom Boy - managed by Tom Armstrong  
1975: Neil's Tom Boy- Neil & Diane McFadden  
1990: purchased by Tim Rawlings - Food Town  
1996: Brent & Jill Hazlewood purchased building, moved Hazlewood Drug Store from across street

# SOUTH RAILWAY - NORTH SIDE



**Boissevain-Morton Regional Library**



**Boissevain Bakery . Boundary Co-op . T.M. Adult Ed Center**



1962: built by Albert Trotter - MacLeods Hardware  
 Year?: Style-Rite rent 3 years, declares bankruptcy  
 1994: purchased by Michael Waldron (Cherry Creek Gallery west side) & Ron Fikkert (Boissevain Bakery)  
 1999: Cherry Creek Gallery closed & liquidated stock  
 Later: half building space rented by Kim Stobbe & Heather Garden. Opened The Station - gifts & collectables  
 2000: Audrey Hicks purchased The Station gift store  
 2002: Audrey moved business to former Pringles' Men's Wear location across street  
 2004-2006: Cherry Creek Gallery - gifts, pictures, noon lunches, operated by Sharon Waldron  
 2008: Michael Waldron purchased Fikkert half  
 2008: Boissevain Bakery moved out and built new building, next door  
 Year?-2013: Field's Department Store  
 2014: Boissevain-Morton Library moves into building



1997: new 50' x 100' building for Telemarketing Centre  
 2010: Boundary Co-op purchased building. Administration offices on west side; Turtle Mountain Adult Ed Centre on east side  
 2011: MTI closed in October



**Boissevain Recorder**

1996: Wayne Robertson moved former Ice Cream Parlour building to S.Railway East. Addition put onto back of building. Sand's Styles ladies clothing shop moved into front of building. Frank Burton Electric at rear of building  
 2010: Lorraine and Les Houston purchased building; relocated Boissevain Recorder



## COOK STREET



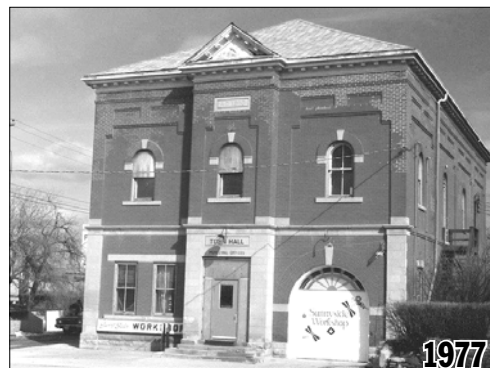
**Roy Johnston TDS Law Office**

1956: Law Office of C.Y. McKenzie & Don Crerar  
 1961: purchased by Ross & Harry George  
 1990s: J.A.H. George Law Office  
 1973: Ross George moved to Brandon as Crown Attorney  
 1995: Harry George retired  
 2004: Roy Johnston TDS. Open one day per week



**Old Town Hall: Gymnastics Centre . Arts Council Education Centre**

1910: Boissevain Town Hall built. Main floor office space and Boissevain Fire Pumper upper floor - performance stage, used for dances, concerts, meetings  
 1970: Council moved to new offices built on main street  
 1970s: A.M.R. occupy main floor  
 1980s: renamed The Hand Crafter - moved to S. Railway  
 Later: Main Floor - Fitness Centre and professional services dental office, denture clinic  
 1990-1994: Hair Teasers 1994-1995: Clip'n Curl  
 1990s: Turtle Mountain Twisters Gymnastics Club move into upstairs  
 1997: K.B. Video, operated by Kevin Orriss  
 1997: West Fit Physiotherapy opens  
 2001: Merle Neufeld purchased business and renamed Turtle Mountain Physiotherapy  
 2011-13: chiropractor 2 days a week. Later relocated to #10 Hwy  
 2013: Professional Services; Addictions Foundation; Deb Calverley CGA  
 2015: Turtle Mountain Physio moved to South Railway St.  
 2017: Boissevain-Morton Arts Council opens Arts Education Centre. Precision Denture Clinic re-opens 1 day/wk





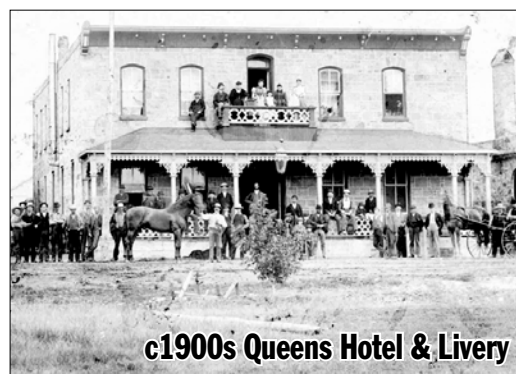
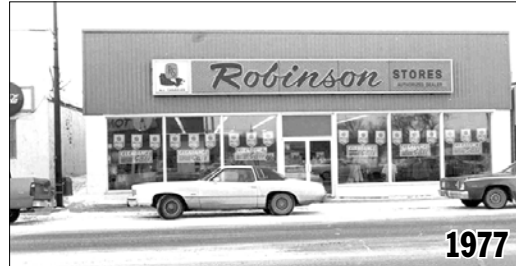
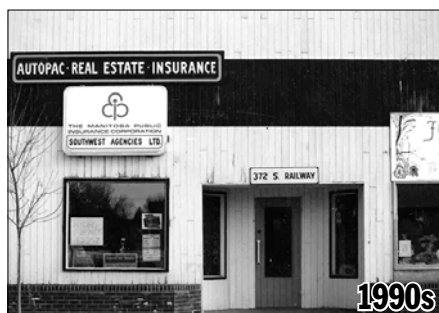
# SOUTH RAILWAY - SOUTH SIDE


**Royal Bank**
**Turtle Mountain Appliances Furniture & Floor Store**


1950s: bank - 2 storey building with residence upstairs  
1964: old bank demolished - new bank building constructed at same site. Royal Bank headquarters temporarily moved to E.B. Gowler building

1940-50: Scotty's Groceries  
Later: purchased by Walter & Teena Newton  
1966: purchased by Ray Desjardins  
1973: Marshall Wells Hardware  
1979: Pugh's Paint Centre - Jim Pugh Sr. & Jr.  
1992: purchased by Brian & Darlene Smith  
2005: Corey Fluker purchased business  
2008: Fluker sold to Ken Hole, expanded T.M. Appliances

1946: butcher shop - Charlie Oakden & Ed Clark  
1956: groceries added - named People's Meat Market  
1960: Oakden buys Clark's share of partnership  
1965: store sold to Winter's IGA  
Later: sold to Ray Desjardin,  
Later: sold to Larry Mennie  
1973: sold to Bob Wintle - Bob's Home & Furnishings and Sears outlet  
1987: purchased by Ken Hole, moved Turtle Mountain Appliances from Stephen Street


**Southwest Agencies**
**Pringles Sports Excellence**

**c1900s Queens Hotel & Livery**


1933: built theatre - operated by Vic & Vera Hammond  
1954: building sold to Dave Hickson - converted to a 'pool room'. Vic & Vera Hammond opened new theatre on Stephen St. South  
Later: building became a video & games room  
Later still: purchased & remodeled by Jack Henwood - Henwood Insurance  
1987: purchased by Rich Reimer - Southwest Insurance Agencies  
2017: Dr. Patrick Lavigne, chiropractor rented office space.

1890: Queen's Hotel built, sandstone building  
1950s: food outlet known as Mosie Inn  
1962: purchased by Bill & Ida Holowka  
1969: destroyed by fire on Mother's Day  
1974: Robinson Store, Style Rite Chain & Off-Price Store  
1997: Cal's Pro Hardware owned by Cal Bell & Lory Saban  
1998: closed  
2000: purchased by Pringles' Men's Wear

## SOUTH RAILWAY - SOUTH SIDE

**Andrew Agencies****Sunrise Credit Union**

pre1968: Peace Garden Café (Yin & Fred Dong)  
 1968: purchased by George & Lena Cooper  
 Later: purchased by Ed Clark – opened as furniture store  
 1976: new building, owned & operated by Brian Clark as Clark Agencies  
 2013: Andrew Agencies Ltd. - insurance

**NEXT LOT/BUILDING TO WEST**

1909: Johnson's Hardware operated by Ed Johnson Sr.  
 1936: joined by son, Ed Johnson Jr., operated as Ash-down's & Sunset Store  
 1969: closed  
 1972: purchased by Arnett Groves, operated as Eaton's Mail Order Outlet and TV Sales & Service  
 2004: Turtle Mountain Credit Union purchased lot, and adjacent lot



1940s: Dunn Brothers Grocery  
 1949: purchased by Boissevain Co-op  
 1962: Boissevain Co-op moves across street at new grocery store  
 1969: N.S. Hunter Ltd. independent clothing & notions store owned & operated by Norm & Fran Hunter  
 1974: purchased by Robert Thibodeau - Jack's Furniture & Upholstery  
 1979: destroyed by fire  
 1980: Boissevain Credit Union building built  
 2008: Turtle Mountain Credit Union amalgamated with area credit unions to become Sunrise Credit Union

## NORTH SIDE

**Paterson Elevator (West)**

1928: Manitoba Pool Elevator built  
 2000: closed  
 2002: reopened by Paterson Grain

**(Lot west of Pool elevator)**

1960: Man. Pool purchased Lake of the Woods Elevator  
 1978: main elevator demolished



1949: George & Art Dring started Dring Laminated Structures  
 1987: Dring Canada sold to Western Archrib of Edmonton  
 1999: new offices built on west side of building

## WESTERN ARCHRIB



# BOISSEVAIN & DISTRICT Chamber of Commerce

*Dedicated to serving Boissevain and Morton*

**Celebrate the spirit of Canada  
by supporting your local merchants.  
Together we can continue  
to build our local economy.**



As we celebrate Canada's 150th anniversary, we look back at the essential role business played in shaping Boissevain and the Municipality of Morton.

The Chamber of Commerce looks forward to continue building a prosperous community as we provide the foundation for the next 150 years. The businesses and services in our rural community only exist because of and for the people we serve.

*Thank you for shopping at home*





# Canada 150

## CELEBRATE IN 2017

*with*

## BOISSEVAIN-MORTON

**It is great to see our community and the nation come together  
in celebration of Canadian history.**

**The businesses, organizations and residents in Boissevain-Morton  
have a great deal to be proud of  
and this is a great opportunity for us to celebrate our rich heritage.**

*Wishing all of our neighbours  
in this community  
a safe and happy Canada Day weekend!*

**COUNCIL OF THE  
MUNICIPALITY OF BOISSEVAIN-MORTON**

Mayor Ed Anderson, Councillors Rob Adams, Lonnie Graham, Eric Reichert,  
Judy Swanson, Rhonda Coupland, Elmer McCallum, Douglas Robertson, David Stead,  
and Municipal Staff

*Happy 150<sup>th</sup> Canada !*

# Happy *Canada* Day!

For complete list of  
**Canada Day events**  
 in Boissevain visit  
[www.therecorder.ca/events](http://www.therecorder.ca/events)

*Show your pride!*  
**Canada Flag Sale**  
 70D Nylon • Grommets • 27 x 54 in  
 Reg. \$29.95

*sale* \$23.50



## Holiday time

**NO PUBLICATION**  
 of the Recorder on  
 JULY 14 and 28  
 AUGUST 11 and 25

**AD DEADLINE:**  
**TUESDAY @ 5:00 PM**

*The office will remain open  
 for your convenience.*

@ the **BOISSEVAIN** Recorder

### JULY

SUN	MON	TUES	WED	THUR	FRI	SAT
25	26	27	28	29	30	1
2	3	4	5	6	7	8
<b>NO PAPER</b>	<b>NO PAPER</b>	<b>NO PAPER</b>	<b>NO PAPER</b>	<b>NO PAPER</b>	<b>NO PAPER</b>	<b>NO PAPER</b>
16	17	18	19	20	21	22
<b>NO PAPER</b>	<b>NO PAPER</b>	<b>NO PAPER</b>	<b>NO PAPER</b>	<b>NO PAPER</b>	<b>NO PAPER</b>	<b>NO PAPER</b>

### AUGUST

SUN	MON	TUES	WED	THUR	FRI	SAT
30	31	1	2	3	4	5
<b>NO PAPER</b>	<b>NO PAPER</b>	<b>NO PAPER</b>	<b>NO PAPER</b>	<b>NO PAPER</b>	<b>NO PAPER</b>	<b>NO PAPER</b>
13	14	15	16	17	18	19
<b>NO PAPER</b>	<b>NO PAPER</b>	<b>NO PAPER</b>	<b>NO PAPER</b>	<b>NO PAPER</b>	<b>NO PAPER</b>	<b>NO PAPER</b>
27	28	29	30	31		



Sign up for a **FREE** 3-month  
 ON-LINE trial subscription  
[www.therecorder.ca](http://www.therecorder.ca)





*You're at home here.*

# CANADA 150

history  heritage  tradition

*Happy to be a part of it!*



Our history is rich.  
Our future is bright.  
Thanks to our loyal members  
and dedicated employees.

*You're at home here.*



## Boundary Co-op

Boissevain • Deloraine • Hartney • Waskada



## SOUTH RAILWAY - SOUTH SIDE



The Junction . TM Physio . Copperman Electric . Fit Stop . MNP



Hair Teasers . BDO

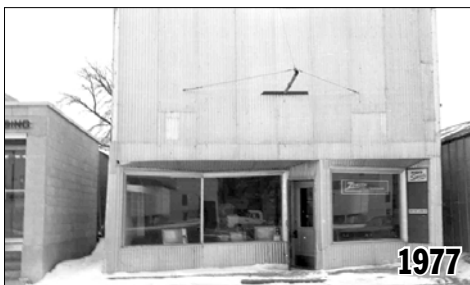


1930s-40s: originally Ryan House  
 1952: North Star Oil, Meteor Monarch Car, Massey Harris Dealership owned-operated by John Sushelnitsky  
 1956: added Pontiac car dealership  
 Year?: business moved to Hwy #10 north  
 1959: property purchased by Boissevain Co-op  
 1962: Co-op opened newly built grocery store



1945: Kinsey Brothers Plumbing & Tinsmith shop operated by Eddie, Albert & Grandpa Kinsey  
 1970: Riddell's Plumbing & Heating. Purchased by Bob & Ken Riddell. Bob died in 1973. Ken operated shop until 1985  
 1985: purchased by Dale Merritt – Boissevain Plumbing & Heating  
 1996: sold building to Co-op and moved business to Broadway South

1996: Co-op expand food store onto lots where plumbing shop & ice cream parlor were located  
 2013: Co-op store closed – relocated to Cherry Street  
 2015: Merle Neufeld and Marc Loewen purchased building  
 2016: building now called The Junction  
 Houses Turtle Mountain Physio, Copperman Electric, Fit Stop, MNP, and business incubator



1945-51: Harold's Café - Harold Tait & family  
 1951: purchased by Mr. & Mrs. Chernick – Thrifty Style Centre, clothing  
 1960: ladies store operated by Astles of Deloraine  
 1961: purchased by Jim Pugh Sr. & son, Pugh's Paint Centre  
 1993: building purchased and demolished by Rae Turner  
 1993-96: Ice Cream Parlor operated by Rae Turner  
 1996: Wayne Robertson purchased building, relocate to north side of South Railway & Broadway, now Boissevain Recorder office  
 1996: Boissevain Co-op purchased lot



1939-64: Gillings Jewelry  
 1964: purchased by Dorothy Wilson  
 1988: purchased by Carol Clark – jewelry store until 1991  
 1991: purchased by Tannis Coulter, Deb Barwick & Carolyn Friesen, operated as Hair Teasers  
 Year?: Tannis Coulter sole owner



1951: Sunshine Electric - Earl & Vi Clark, opened new building on Hwy #10 in 1962  
 1960s: T.V. Sales & Service purchased from Ed Clark by Moe De Vrieze  
 Later: demolished – new building built  
 1969: Boissevain Credit Union opened banking facility  
 1980: Credit Union moved to corner of S. Railway and Stephen Street  
 1980: Jack Johnston opened chartered accountant office  
 1993: Sold to Grant Kirkup & Co.  
 2000: Scott Anderson purchased firm  
 2005: D.S. Anderson merged with Duncan Sabine Collyer Partners  
 2010: BDO Tax & Accounting purchased from DSCP

# 2017

*Wishing our country a very happy 150th year*

To see schedule of July 1 Canada Day events visit [therecorder.ca/events](http://therecorder.ca/events)

## SOUTH RAILWAY - SOUTH SIDE

## Gord's Service



1934: Conroy's Garage - Art & Bill Conroy  
1952: purchased by Gordon Facey - Gord's Service  
1990: son, Blaine Facey took over business  
2016: Blaine retired. Garage closed, building empty

## The Hand Crafter



1950s: Cockshutt Implement dealership & coal sales operated by Ed Dow  
Later: building demolished  
1988: new building, Boissevain Association for Community Living - The Hand Crafter



## Sawmill Tea &amp; Coffee Co.

1980-81: War Bonnet built by Irvin Goodon - western clothing store  
Later: purchased by Kim Stobbe, opened as Wild Rose Emporium, antiques & crafts  
1994: purchased & operated by Darlene Mossett  
1997: purchased by Kim Stobbe & Heather Garden, opened as Lady of the Lake - ladies & children's clothing  
1997: closed, Hand Crafter purchased building for storage  
2010: converted to restaurant & meeting place - Sawmill Tea & Coffee Co.

## STEPHEN STREET - EAST SIDE



## Apartments

pre1944: Lawler Blacksmiths  
1944: Harold & Son, Harry Crowston - black smith & repair shop  
1952-57: operated by Harry only  
1964: present building built for business; dental offices - Dr. George Sanderson; Bailey's TV Repair Shop; hairdresser shop in basement - Kathy (Harvey) Wilkinson  
Later: converted to four suite apartment block



## Boissevain Community Theatre



1955: built by Vic Hammond, opened as Victoria Theatre  
1974: purchased by Bill Petras  
Later: purchased by Murray Adolph  
2004: operated by community as theatre  
2009: theatre declared unsafe and closed  
2011: theatre rebuilt to become the Boissevain Community Theatre



## Choy's

1946: Bus Depot Café - operated by Keith & Millie King  
1947-1979: Tony Merino operated barber shop in back  
1951: purchased & operated by M.C. Johnson  
1950s: Henry Mullen purchased  
1960: purchased by Charlie & Edna Simpson, renamed Simpson's Lunch  
1974: Garry & Betty Kilmury purchased - operated by Judy Swanson as B & G Lunch  
1976: Steve's Lunch - Steve Lamm  
1979: Wing Ho Restaurant - Michael & Nancy Sin  
1980: Wing Ho - Ian and Donna Kwong  
1986: Wing Ho - Sam and Sun Lee  
1993: Choy's Restaurant - Terry & Ling Choy  
2015: Choy's Restaurant - Yuan Tang and Su Li Liang



# STEPHEN STREET - EAST SIDE



**Boundary Co-op Home & Agro Centre**



1946: Rawson Quick Freeze  
1952: Johnson's Frozen Foods (Miff & Edith Johnson)  
1963: purchased by Tom Robinson  
1972: purchased by Ed Pulver - Boissevain Meat Processors  
1980: purchased by Bob Cappelle  
1987: purchased by Don Voodre  
1994: purchased by Greg Nykoliation, included abattoir  
1998: closed  
1999: Voodre reopened abattoir & retail - East Side Meats  
2000: St. Paul's United Church Thrift Store  
2005: Building demolished. Co-op built storage facility



1958: The Hatchery built by Frank Shelton  
1960s: Gowler's Furniture (Jim Gowler)  
1970: Arnett's Radio & TV  
1971: Boissevain Fashion Fabrics  
1971: Jack's Upholstery - operated by Robert Thibodeau  
1972: grocery store (George Maguire)  
Later: purchased by Bill Petras - Convenience Store  
1986: destroyed by fire  
2004: storage lot of Boissevain Co-op



1955: lumber & farm supply  
1968: building destroyed by fire  
1969: rebuilt as Boissevain Co-op  
Farm Supplies & Lumber  
2011: Now called Boundary Co-op

# STEPHEN STREET - WEST SIDE



**Boundary Co-op Storage Lot**



1946: J&M Motors - Ford/Monarch dealership  
1952: Modern Motors - Jake & Wally Engbrecht  
1950: Du-Rite Motors - George A. Dyck & Ed Franz  
1969: Merv Johnson became partner  
1992: serious explosion damaged showroom & shop  
George Dyck relocated business to Hwy #10  
2004: Boissevain Co-op use as storage for farm supplies  
2011: Boissevain Co-op purchased lot



**Boissevain ArtsPark**



1946: IHC - E.B. Gowler International Harvester Equipment  
1946: new building built which included adjoining lot  
1961: purchased by John McDonald, Hugh Broadfoot & Ray Nickolson. Renamed J.H.R. Farm Equipment  
1978: ownership by Hugh Broadfoot, Allan Bessant & Ron Walker  
1983: business moved to Hwy #10 North (east side)  
1996: Stephen Street building demolished  
1999: creation of ArtsPark flower garden



## STEPHEN STREET WEST &amp; COOK STREET EAST



Facing Cherry Street - 2017



Back side on Stephen St. 2017

Boundary Co-op Grocery



2009

## THE RECORDER

1956: Frank Shelton Hatchery  
Barber Shop on corner - Tom Southgate  
1959: Boissevain Recorder - Bob Jones & Russell Jasper moved office and presses from southeast corner of Broadway and South Railway (now heritage site)  
1963: Russell Jasper accidentally drowned at Lake Max  
1965: Recorder sold to Miles Phillips  
1999: Recorder sold to Lorraine & Les Houston  
2010: Recorder moved to northwest corner of Broadway and South Railway - kiddy corner to where Recorder office was located fifty years earlier  
2010: Boissevain Co-op purchased Recorder, Laundromat and Clip 'n Curl buildings, demolished  
2013: Co-op opened new grocery store, facing Cherry Street. Building 16,000 sq. ft. and cost \$4.5 million to build

## LAUNDROMAT

1950s: Harold Ready & Gordon Davis insurance agency  
1950s: offices of Boissevain Credit Union  
1960: Bob & Annette Deleurm, Spic-N-Span Cleaners  
1968: added coin-operated laundromat  
1979: added outdoor car wash  
1983: purchased by Nancy & Garry Ransom  
1990: closed, equipment old  
1990: Brad Turner operated Wild Things Taxidermy  
1997: purchased by Don & Vera Voodre, laundromat  
Later: purchased by Pam Brown, laundromat  
2010: Boissevain Co-op purchased building

## CLIP 'N CURL

1950s: Jim Pennoch, horse harness repair shop  
1965: Jack Cowie, shoe repair shop  
1983: Bob Deleurm, appliance repair shop  
1985: purchased by Ken Hole  
1987: Ken moved business to South Railway  
1995: Clip 'N Curl hairdresser shop, Wendy Hart  
2010: Boissevain Co-op purchased building

## PARKING LOT

1940s: John Deere Equip. & Dodge-Desoto Cars & Trucks  
1951: George Love renamed Boissevain Implements  
1965-70: dealership purchased by John Krahn  
1970: purchased by Ken VanBesselaere, dealership moved to Hwy #10 N. Building demolished  
Later: parking lot for Boissevain Co-op Grocery Store

## HIGHWAY #10 EAST SIDE



2017

Snazzy Seconds Thrift Shop . Morrow Plumbing &amp; Heating



1980

1950s: Sam Oake built three-bay service station on corner  
Later: son Gary Oake converted to TV Sales & Service - after Sam's death  
1958: Albert & Arthur Dixon rent building, later purchased by Arthur  
1965: Art Dixon, Case dealership - son, Ken joined business  
1976: Ken sold Case dealership to Irvin Goodon & John Hofer  
1979: purchased by Al Leforte  
Later: purchased by Merv Bomford - operated as Texaco Service Station  
Mid 1990s: closed  
1997: building purchased by Brenda Nixon  
1997-1999: Kiddies Corner - clothing store operated by Rachel Baron  
1999: Turtle Town - coffee, turtle treats, arts & crafts - Rachel McLeod  
1999: South part rented to Rick O'Greysick, News-in-a-Minute, print shop, hobby cars  
2000: Rick moves to S. Railway, purchased vacated Pringles' store  
2000: North section opened as Tanya's Café; south, as John The Plumber  
2001: John The Plumber closed  
2003: Southerly part operated as video, rental store  
2004: Rod & Monica Hintz open Video Rentals & Framing  
2008: North End - Anita Crowe, dollar store & Sears Outlet  
South End - St. Pauls United Church, Snazzy Seconds  
2011-14: Jodi Maurice opened dollar store  
2015: Jason Morrow purchased building from Bob Nixon  
North end - Snazzy Seconds  
South end - Morrow Plumbing

# HIGHWAY #10 EAST SIDE

## Boundary Co-op Carwash Gas Bar Convenience Store

1922: Monarch Lumber  
1972: purchased by Revelstoke Lumber  
1980: closed – buildings removed  
1994: purchased by David & Maggie Neufeld, opened Room to Grow Greenhouse  
1998: property purchased by Co-op  
2001: Co-op built gas bar, carwash, convenience store



## Red Coat Square

1959: Skating Rink, new arena built on Fair Grounds  
1967: lots purchased by Robert & Vonda Warnez, construct Boissevain Motor Inn, 16 units, licensed dining and banquet room  
1970: three additional units, serving as The Keg, beverage room, dance floor  
1976: purchased by Rocky & Mary Addison

1977: purchased by Mr. Ali & Son  
1980: purchased by the Rawlucks  
1984: purchased by Gary Roehl, Garry Klohn, Ross Forfar  
1995: motel gutted and re-modeled and renamed Red Coat Inn  
2011-2014: Red Coat Inn sold to new owners  
2016: purchased by Gene Unrau and Doug May, to be converted into apartments and banquet facility



## Laundromat . Border Auto Body



1985: lot purchased by Colleen & Wayne Coxworth, built convenience store - Coxworth's Stop-N-Shop, open holidays & evenings  
1996: Coxworth's doubled store space, add butcher shop, Sear's outlet, Travel Agency & groceries  
2000: purchased by Barry & Eileen Sawatsky, renamed B & E Stop 'n Shop  
2003: B & E add building extension on north side  
2006: Sawatsky's sold business to Shop-Easy-Foods  
2007: Shop-Easy-Foods closed  
2011: property and building sold to Wes Froese, leased to Tim Koop. Rental units at back, Border Town Storage & Rentals  
North side - Cory Janssens opened Laundromat. South side rented to Dr. Patrick Lavigne, Chiropractor. In 2017 relocated to S. Railway.

1987: Eric & Sheila Reichert - new building. Border Auto Body, moved from Broadway  
1996: added Tire Shop  
2004: purchased by Tim & Tricia Koop of Steinbach



## Homesteader Collectibles . Westman Mobile Tire Services . Subway



1940: shop & storage for Department of Highways  
1967: Service Station, built & owned by John Sushelnitsky  
1968: purchased by Ed Franz renamed Hi - Way Auto Plymouth Chrysler Dealership; carwash bays  
1990-1994: purchased and operated by Dave & Larry Vendsel  
1996: purchased & demolished by Bob & Brenda Nixon, Estevan  
1997: new building - Homestead Collectibles – antiques Bob Nixon, water hauling, bobcat services  
2003: front rented by RCMP Special Border Services  
2005: Fitness Fanatics opened by Ed (P.G.) Dyck  
2008: Fitness Fanatics moved to new building Ed Dyck built on farmyard, one km east of Boissevain  
2011: Subway - west side facing #10 Hwy  
2013: Westman Mobile Tire Services – operated by Cory Popplestone

# HIGHWAY #10 EAST SIDE



**Canadian Wilderness Inn**

**2017**



**1958**



**1977**



**1977**

- 1958: Lyle & Pearl Robb purchased and moved Desford Store, rebuilt & opened as Garden Motel. Additions - lunch counter, gift shop, dining room, 12 units
- 1975: Garden Motel purchased by Bruce Orriss, added large banquet room
- 1995: Garden Motel purchased by John Bjarnason
- 1997: purchased by Willie & Darlene Schwartz
- 2000: closed
- 2001: purchased & demolished by Irvin Goodon
- 2003: newly constructed Wilderness Inn, 25 rooms
- 2010: 12 rooms added
- 2011: 12 rooms added
- 2012: 17 rooms added; total of 66 rooms

## POULTRY PACKERS / FIRE HALL

- 1950s: Pembina Poultry Packers, approx. 50 women manually plucked & cleaned chickens
- 2001: Town of Boissevain building housing fire trucks, rescue wagon, tractors, other town properties. Front of building had mural painting of Green Meadows Barn
- 2010: old Fire Hall demolished
- 2012: lot used for Canadian Wilderness Inn



**2017**

## Kroeker Electric . Hot Locks Hair Design . Splashers

- 1951: Highway Lunch built by Ab & Eva Kilmury
- 1972: transferred to son, Garry & Betty Kilmury.
- 1964: other operators included Ross Hicks, Vern Kropelin, Mr. & Mrs. Howlowka
- 1972: Ab & Eva Kilmury took back restaurant and remodeled
- 2001: closed due to Garry's ill health – Garry died 2002
- 2002: Betty re-opened with shorter hours
- 2004: Betty sold diner to Veva Currah
- 2011: Veva moved restaurant to new building owned by Trevor Hicks, two lots north.
- 2015: Trevor Hicks purchased lot – built three bay car wash



**1977**



**1977**

- 1962: built by Earl & Vi Clark. Clark's Electric - rear part of building, Vi's Flower Shop – front part
- 1965: purchased by Henry & Betty Froese. Renamed Boissevain Flower Shop, greenhouse added to rear of building
- 1976: purchased by daughter, Wendy Turner. Renamed Village Green
- Later: husband Wayne opens barber shop in rear part



**2017**

## Border Town Restaurant

- 1951: Car repair garage. Joe & Kitty Marriott moved building from Ducker Street, two bays added to the south side
- 1963: purchased by Norm & Don Smith - Esso Service
- 1966: purchased by Mel Pringle & Elmer Reese
- 1975: purchased by Doug Freeman, added GM Dealership
- 1992: Doug added car wash at rear of building
- 1999: business closed
- 2002-07: Steve Maurice opened general auto repair & service shop
- 2009: building demolished
- 2011: Trevor Hicks built restaurant. Leased by Veva (Currah) Phillips, Veva's Diner.
- 2015: Veva gave up lease
- 2016: Rick Pauls takes over lease and opens Border Town Restaurant



**1977**



**1977**

- 1962: built by Albert Kilmury. Son Garry opened Garry's Sporting Centre
- Year?: Gift House operated by Mrs. Fin Gerdis
- 1975: purchased by Herb & Bert Barwick, opened Barwick's Sports Shop
- 2013: Managed shop until Bert's death in 2013
- 2014: Building purchased by Conner Kroeker, Power Baron Electric + Parkside Construction



# HIGHWAY #10 SOUTH



**R.F. Wilkinson Trucking**

1946: Haddon Wilkinson purchased first truck to haul grain, gravel & soil. Added cement truck & front end loader.

1976: son Ross took over business, Haddon helped till his death in 1991

2010: Trevor Hicks joins partnership with Ross Wilkinson. New office built



**Goodon Industries**

1972: Irvin Goodon moved lumber business to Boissevain. The company started in a 10' x 14' office building. It expanded to 10,000 sq. ft. of storage & office. It produced & sold pole-buildings, sold barbed wire, lumber, metal-clad walls & roofs, hardware and treated fence posts  
1993: New facility built. Owned & operated by business partners Irvin Goodon & Brian Tyerman  
2006: Trevor Hicks & Robert Dyck purchased Goodon's

**Double Diamond Farm Supply**

1975: Henry & Bernie Thiessen open Double Diamond fertilizer business on their farm

1979: Moved business to Boissevain. This included a dry-bulk, blending plant & liquid fertilizer storage, offices & chemical application services. Facilities also in Elgin & Minto

2000: Double Diamond purchased by Corie Cowlthorpe



**Border Town Metals . Du-Rite Motors**

1992: fire destroyed Du-Rite Motors building located on Stephen Street.

Construction of a new building on Hwy #10 south. Ford cars & trucks, Belarus farm equipment. Owned & operated by George A. Dyck & Murn Johnston

1985: N.E.W.S. Enterprizes added, a fleet of trucks hauling grain, cattle, oil, etc.

1989: Due to health, Murn leaves company

2002: Ford dealership ceased. Auto parts store and accessories opened in front section  
2010: George Dyck passed away. Marj Coupland, Lonnie Graham and Jeff Hagyard purchased.

2015: Trevor Hicks purchased Du-Rites

2016: adds new building for truck repair

2012: Border Town Metals opened in adjacent lot, operated by Goodon's

# HWY #10 NORTH



**Busy B**



1969: Norm & Gwen Bernard built Busy B Drive-In

1975: purchased by Keith & Joyce Bartley

Later: purchased by Dot & Keith Hicks

Year?: purchased by Darlene & Glen Rose

1999: purchased by Colleen & Dave Nancekivell

1999: building added to east side of old building

2012: purchased by Keri Sawatsky



**Steads Farm Supply**

1973: Ken Vanbeselaere - Ken's Sales & Service

1982-1987: A. Penner, JD Southgate Implements

1990-1996: Atkinson Implements

1996: Mazer purchased building. Move large back shop to Hartney. Cut into two, but only half of building made it, as first part collapsed making turn onto highway

1996: Agri Mall formed. David Stead and Ron Gibson

1996: Steads Farm Supply opens

**Triangle Welding . Redhand**

1984: Henry Engbrecht Welding

1986: purchased by Laverne Tufts, Larry Opperman & Bill Miller - Triangle Welding

1989: Larry Opperman & Bill Miller buy Laverne's share

1994: Bill buys Larry's share

2001: purchased by Paul Bell and Redhand



**Boissevain Animal Clinic . Rocky Mountain Equipment**

1996: With retirement of Dr. Roy Wilbee a local group formed to construct a modern equipped new building procurement of Drs. Jeff Gervin & Haley Adams

1997: Boissevain Animal Clinic opened

1983: Boissevain Farm Equipment built shop - Hugh Broadfoot & Al Bessant

2002: purchased by Red Power Equipment

2008: purchased by Miller Farm Equipment

2012: purchased by Rocky Mountain Equipment